



Safety & Performance Improvement with Neuroscience

In strategic partnership with



A strategic partnership between

GEP, the leading company of Health & Safety Advisory Services in Greece & SE Europe, which is actively providing consultancy to more than 3.000 organizations in 13.000 premises all over Greece



Optimal Neuro (part of Optimal HR Group), the best neuro-tech equipped lab in SE Europe, with an expertise that expands to 300+ neuromeasurements in 15+ countries all over the world.



The co-creation

An innovative scientific approach adding value to Occupational Health & Safety traditional methods of monitoring and prevention.

A customized and **non invasive** solution for safety performance optimization, exploring unknown data on the safety behavior.

The use cases

Training & Skill Transferring

Improve and shorten the process of learning by observing aggregated behaviours and gaze patterns of the professionals to identify collective mistakes and blind spots. The incorporation of the eye tracker into the training process allows for real-time feedback and the possibility to examine errors and potential areas for improvement in post-session activities.

Safety & Situational Awareness

Identify the risks and underlying causes of human errors. Enable reliable identification of risks through “the eyes of the employees” and facilitate inherent safety improvement process.

Quality Assurance

Evaluate existing quality assurance procedures, as well as visual inspections, protocols’ efficiency and identify guidelines improvement areas to facilitate operational excellence.

Verify that the quality standards of a process are respected, while at the same time, improve their efficiency in order to guarantee that the product requirements are met.

Ergonomics & Process Optimization

Assess if the work environment is optimized for the tasks that are performed around it and improve productivity. Test and improve the safety signage selection and proper placement so that it can be easily used and ultimately improve operational and safety efficiency.

The technology & equipment



Eye tracking

It is a non-invasive tool that allows you to observe the concentration distribution and reactions of the operator during the execution of a task.

It allows the real time recording of the data during the execution of a task, when skills are put into practice and can therefore be measured objectively.

It does not obstruct the wearers' visual field, thus it allows them to **act naturally**.



Electroencephalogram

EEG can directly measure the neural activity that originates from the brain regions that are active during a cognitive or physical process.



Galvanic Skin Response

GSR measures the electrodermal activity (EDA) during the activation of sweat glands in the participant's palm.

GSR is used to analyse the level of emotional response that is caused by strong emotions, such as joy, excitement, anger etc.

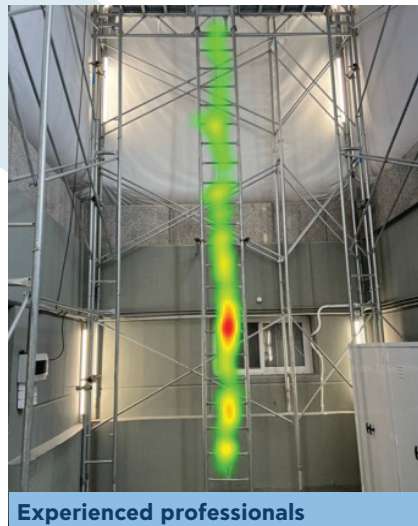
The results

Heatmaps
Gazeplots
KPI's

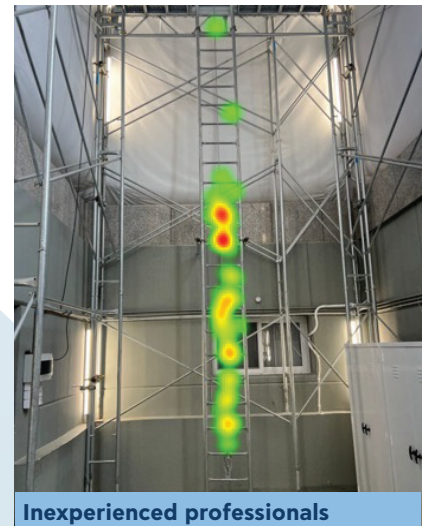
Risk assessment
Training material
Optimization analysis

Signage improvement
Workspace modification
Quality management

Real case



Experienced professionals



Inexperienced professionals

Health and Safety Advisors

gepgroup.gr



Athens Offices

51 Samou St. & Fragkokklisias St.
151 25 Maroussi, Athens, Greece
T: +30 210 940 5866
E: info@gepgroup.gr

Thessaloniki Offices

293 Lagada St. 564 30 Stavroupoli,
Thessaloniki, Greece
T: +30 2310 686 070
E: thessaloniki@gepgroup.gr



Connect with us:

